

INSTALLATION

- The valve is easily installed in line between the shower outlet and showerhead or hose (standard 1/2" connections).

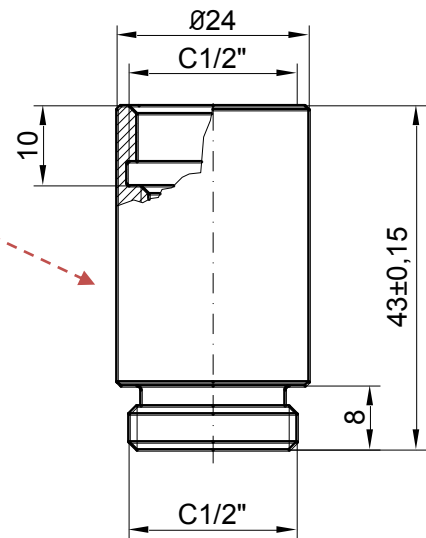


FEATURES

- This safety valve eliminates the danger of scalding by means of an automatic shut-down when through-put temperatures exceed $48^{\circ}\text{C} (\pm 2^{\circ}\text{C})$ ($118^{\circ}\text{F} (\pm 4^{\circ}\text{F})$).
- The heart of the device is a thermostatic wax element that expands and contracts in relation to the water temperature.
- The valve causes no flow restriction.

OPERATION

- Turn on cold water first, then add hot until the desired temperature is met (do not turn on hot by itself).
- Should there be a reduction in the cold water supply temperature causing a rise in output exceeding $48^{\circ}\text{C} (\pm 2^{\circ}\text{C})$ ($118^{\circ}\text{F} (\pm 4^{\circ}\text{F})$), the valve will automatically close, shutting water delivery down to a trickle.
- Once the supply temperatures are normalized (usually a few seconds), the valve will open, permitting showering to continue.
- Should the faucet or shower valve be turned off while the automatic valve is still closed, water will continue to drip until valve is clear of the remaining hot water.



ATTENTION

- Since this automatic shut-off valve is linked directly to a shower device, it leaves the function of the tub filling mode unaffected (no limit on hot temperature through that channel)

